

MarQ 10 Tender-Lift[®]

The *MarQ 10* extends the new *MarQ* series of davits to the thousand pound capacity range. Like its smaller siblings, the *MarQ 10* epitomizes the primary design goal at MarQuipt:

To combine beauty, form and function in a high-quality product that will increase your enjoyment of yachting.

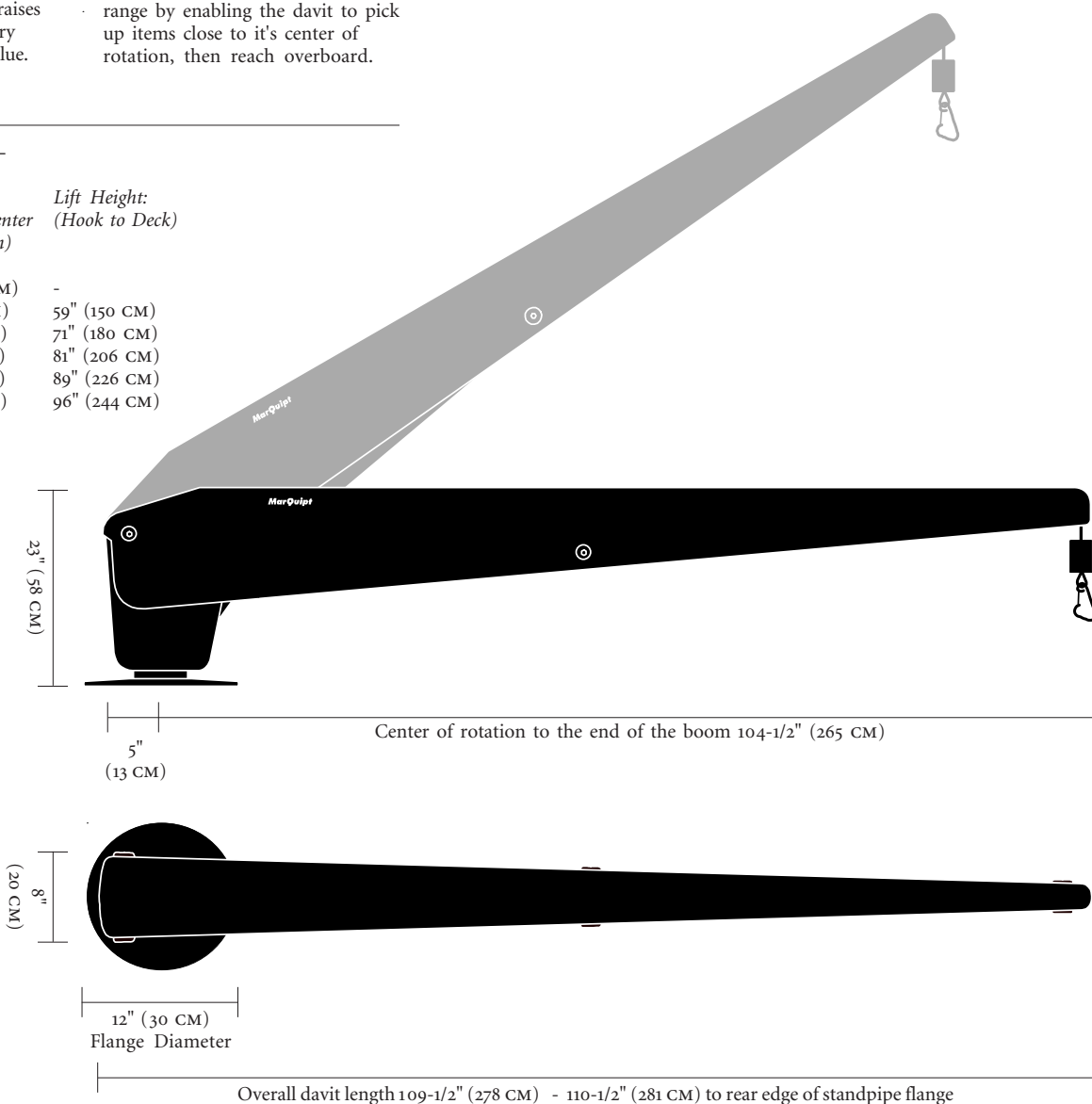
Low enough to stow virtually hidden beside your dinghy, you may find the *MarQ 10*'s elegant lines admired by other yachters when your tender is in use. The latest *MarQ* series davit raises a new standard, set by the industry leader in quality, reliability, and value.

- 1000 LBS (455 KG) lift capacity.
- *Tender-Lift* system (our drumless hydraulic winch technology) provides smooth, nearly silent, tangle and trouble-free 18-½ feet (5.6 M) of cable travel without a winch box protruding from either side of the boom.
- Hydraulic boom control allows precise boom angle adjustments to be made under load. Assists in reaching over obstacles and railings, and allows for an expanded reach range by enabling the davit to pick up items close to its center of rotation, then reach overboard.
- 360° manual rotation on non-corrosive composite bearings.
- Hydraulic rotation option provides powered control of all functions when combined with the hydraulic boom elevation option.
- Mounts on our standard 4-1/2" (11 CM) diameter standpipe.
- Custom base mounts eliminate the standpipe for transom applications.

- Painted to match your yacht.
- Weight: 225 LBS (102 KG) without the standpipe.
- The remote mounted hydraulic power unit measures: 12" x 9" x 18" [H x W x L] - (31 x 23 x 46 CM) and includes 8' (2.4 M) of hydraulic hose and control wire from the bottom of the standpipe or base. We can provide longer hose and wire runs to suit your specific requirements.

Boom Operating Angles 0-60°—

Boom Angle: (Variable)	Reach: (Hook to Center of Rotation)	Lift Height: (Hook to Deck)
0° Minimum	104" (264 CM)	-
30°	88" (224 CM)	59" (150 CM)
39°	78" (198 CM)	71" (180 CM)
47°	68" (173 CM)	81" (206 CM)
54°	58" (147 CM)	89" (226 CM)
60° Maximum	48" (122 CM)	96" (244 CM)



Quality-Built
Marine Equipment

3100 Southwest Tenth Street
Pompano Beach, Florida 33069
United States of America

-please contact us for overseas representatives-

TEL • (954) 957-8333
FAX • (954) 957-8330
WEB • www.marquipt.com
EMAIL • sales@marquipt.com

MarQuipt