

MarQ 8 / MarQ 10 Tender-Lift[®] with Hydraulic Rotation—

All the capabilities of our MarQ series davits with hydraulic control of all functions including rotation, a feature traditionally reserved for higher capacity cranes. Full hydraulic control allows for easy short-handed tender launching and retrieval in challenging locations or situations which typically require additional crew assistance.

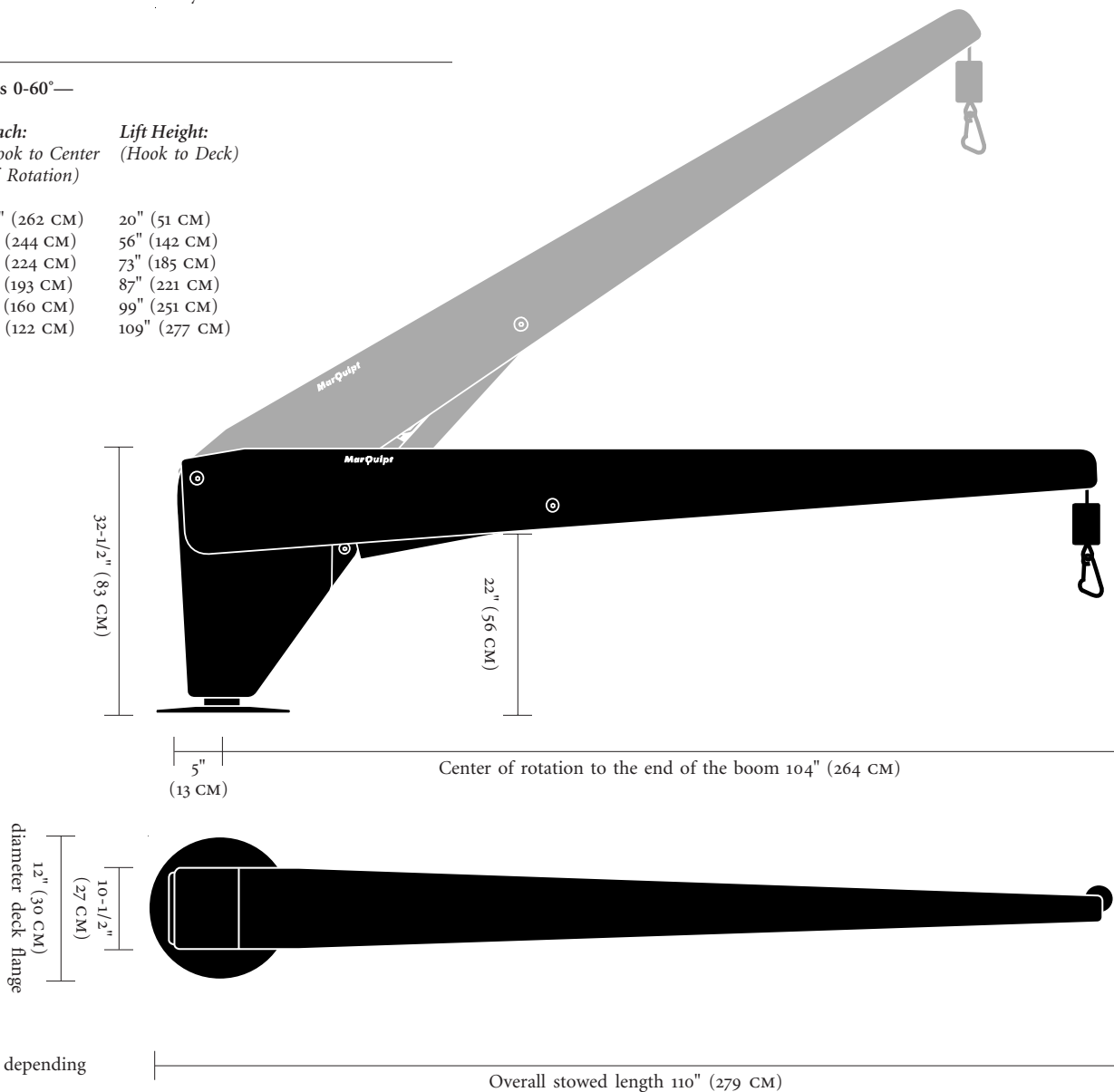
- 800 or 1000 LBS (363 or 455 KG) lift capacity.

- Complete hydraulic-powered control of all davit and tender movements:
- *Tender-Lift* system (drumless hydraulic winch technology) provides smooth, nearly silent, tangle and trouble-free 18-½ feet (5.6 M) of cable travel.
- Hydraulic boom lift allows precise boom angle adjustments to be made under load.
- Hydraulic 180° or 360° rotation makes bringing the tender aboard easy and safe.
- Mounts on our standard 4-1/2" (11 CM) diameter standpipe.
- Custom base mounts available which eliminate the standpipe below deck for transom or reinforced deck applications.
- Painted to match your yacht.

- The remote mounted hydraulic power unit measures: 12" x 9" x 18" [H x W x L] - (31 x 23 x 46 CM) and includes 8' (2.4 M) of hydraulic hose and control wire from the bottom of the standpipe or base. We can provide longer hose and wire runs to suit your specific requirements.

Boom Operating Angles 0-60°—

Boom Angle: (Variable)	Reach: (Hook to Center of Rotation)	Lift Height: (Hook to Deck)
0° Minimum	103" (262 CM)	20" (51 CM)
20°	96" (244 CM)	56" (142 CM)
30°	88" (224 CM)	73" (185 CM)
40°	76" (193 CM)	87" (221 CM)
50°	63" (160 CM)	99" (251 CM)
60° Maximum	48" (122 CM)	109" (277 CM)



*Height varies slightly depending on deck angle.

Quality-Built
Marine Equipment

3100 Southwest Tenth Street
Pompano Beach, Florida 33069
United States of America

TEL • (954)957-8333
FAX • (954)957-8330
WEB • www.marquipt.com
EMAIL • sales@marquipt.com

MarQuipt