

Tender-Lift® Classic 1,000/1,500 with Hydraulic Rotation—

Large, heavy tenders demand a davit with powered functions for safe handling and deployment.

A hydraulic rotation Tender-Lift provides full fingertip control over all functions of the davit: cable in/out, boom up/down and rotate right/left.

- 1000 LBS (454 KG) and 1500 LBS (680 KG) lift capacities available.
- Tender-Lift system (drumless hydraulic winch).
- Smooth, nearly silent 21 foot (6.4 M) cable travel.
- 270° hydraulic rotation.

- Hydraulic boom elevation with zero degree boom elevation lift capability.*
- Your choice of 105" or 120" boom lengths. (measured from the center of rotation to the end of the boom)
- Completely waterproof, low voltage, hand-held remote control system.

- Attractive pedestal base styles available.
- Self contained power unit.
- Extra low profile with remote power unit option.
- Painted to match your yacht.
- Power: 115 or 220 VAC 50/60 HZ.

105" Hydraulic Boom Operating Angles 0-60°—

Boom Angle:	Reach: (Hook to Center of Rotation)	Lift Height:† (Hook to Deck)
* 0° Min.	105" (267 CM) Max.	10" (25 CM) Min.
* 30° Standard	90" (229 CM)	65" (165 CM)
60° Max.	35" (89 CM) Min.	113" (287 CM) Max.

120" Hydraulic Boom Operating Angles 0-60°—

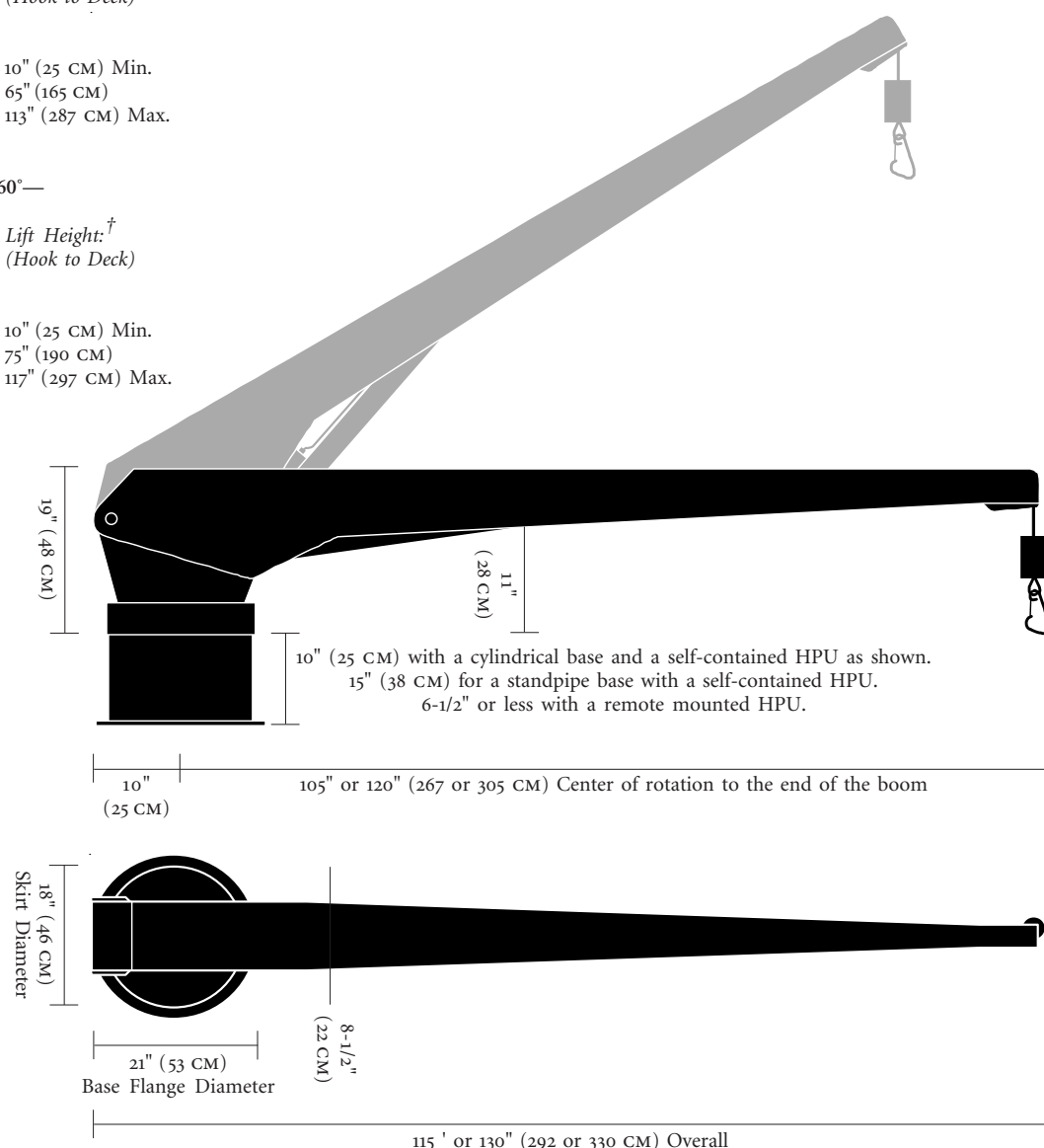
Boom Angle:	Reach: (Hook to Center of Rotation)	Lift Height:† (Hook to Deck)
* 0° Min.	120" (305 CM) Max.	10" (25 CM) Min.
* 30° Standard	100" (254 CM)	75" (190 CM)
60° Max.	56" (142 CM) Min.	117" (297 CM) Max.

* A 105" boom Tender-Lift rated at 1000 LBS (450 KG) will lift that amount at all boom angles from 0-60°.

A 105" boom Tender-Lift rated at 1500 LBS (675 KG) will lift 1000 LBS (450 KG) at boom angles lower than 30° and 1500 LBS (675 KG) at boom angles greater than 30°

All 120" boom Tender-Lifts will lift 900 LBS (410 KG) at boom angles lower than 30° and the full rated capacity of the davit at boom angles greater than 30°

† Lift height values in the tables above assume a 10" cylindrical base as shown at the right. A standpipe base adds 5" of lift height to these values. The 4-1/2" diameter pipe goes through to the next deck. The minimum pipe length below deck is 60".



Quality-Built
Marine Equipment

3100 Southwest Tenth Street
Pompano Beach, Florida 33069
United States of America

-please contact us for overseas representatives-

TEL • (954) 957-8333
FAX • (954) 957-8330
WEB • www.marquipt.com
EMAIL • sales@marquipt.com

MarQuipt