

Tender-Lift® Classic 1,000/1,500 XL (extra low with remote power unit)—

When a lower stowed profile is required, the Tender-Lift XL may be the perfect solution. A full 9" lower than our standard self-contained Tender-Lift, this design removes the hydraulic power unit from the davit and places it remotely in the yacht. The power unit can be hidden in a closet, beneath a settee, in the engine room or lazarette.

- 1000 LBS (454 KG) and 1500 LBS (680 KG) lift capacities available.
- Hydraulic boom elevation.
- Your choice of 107" or 122" boom lengths. (measured from the center of rotation to the end of the boom. 122" available only with hydraulic boom)
- Zero degree lift capability.*

- *Tender-Lift* drumless, hydraulic, tangle-free, winching system.
- Smooth, nearly silent 21 foot (6.4 M) cable travel.
- 300° manual rotation on non-corrosive bearings.
- Completely waterproof, low voltage, hand-held remote control system stows within the davit.
- Optional hydraulic rotation models.

- The remote power unit measures 9-1/4" high x 10-1/4" wide x 18-1/2" long (24 x 27 x 47 CM) and includes 8' (2.4 M) of hydraulic hose and control wire from the bottom of the standpipe or base.
- Painted to match your yacht.
- Power: 115 or 220 VAC 50/60 HZ.
- Weight: 270 LBS (123 KG) without the standpipe.

107" Boom Operating Angles—

Boom Angle:	Reach: (Hook to Center of Rotation)	Lift Height: (Hook to Deck)
* 0° Min.	107" (272 CM) Max.	6" (15 CM) Min.
* 30° Standard	90" (229 CM)	61" (155 CM)
60° Max.	52" (89 CM) Min.	108" (274 CM) Max.

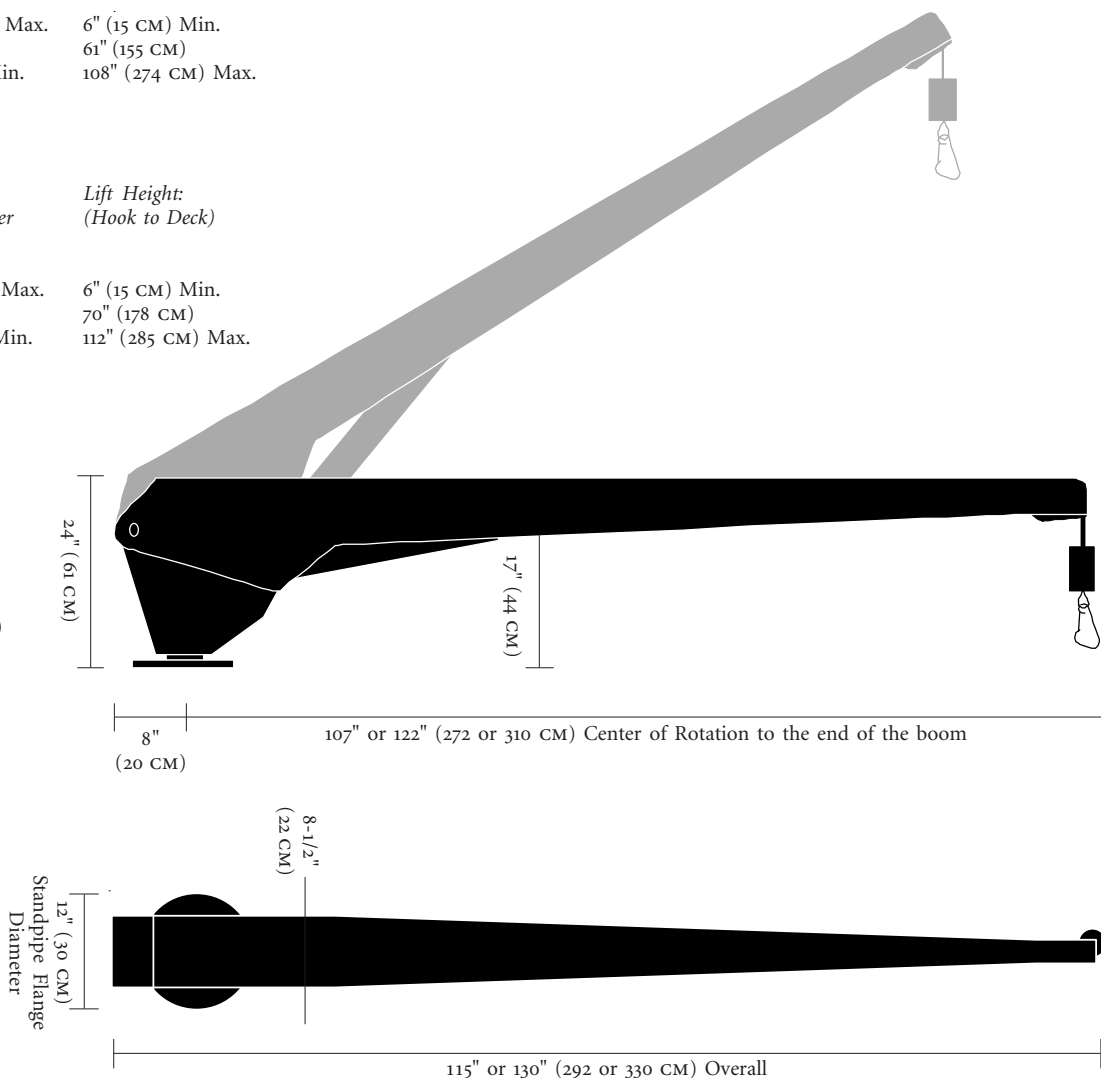
122" Boom Operating Angles—

Boom Angle:	Reach: (Hook to Center of Rotation)	Lift Height: (Hook to Deck)
† 0° Min.	122" (310 CM) Max.	6" (15 CM) Min.
† 30° Standard	102" (259 CM)	70" (178 CM)
60° Max.	56" (142 CM) Min.	112" (285 CM) Max.

* A 107" hydraulic boom Tender-Lift rated at 1000 LBS (455 KG) will lift that amount at all boom angles from 0-60°.

A 107" hydraulic boom Tender-Lift rated at 1500 LBS (675 KG) will lift 1000 LBS (455 KG) at boom angles lower than 30° and 1500 LBS (675 KG) at boom angles greater than 30°

† All 122" boom Tender-Lifts will lift 900 LBS (410 KG) at boom angles lower than 30° and the full rated capacity of the davit at boom angles greater than 30°



Quality-Built
Marine Equipment

3100 Southwest Tenth Street
Pompano Beach, Florida 33069
United States of America

TEL • (954) 957-8333
FAX • (954) 957-8330
WEB • www.marquipt.com
EMAIL • sales@marquipt.com

MarQuipt