

Tender-Lift® 2,000/2,500 Telescopic—

- 2,000 LBS (909 KG) and 2,500 LBS (1,136 KG) lift capacities.
- Two standard boom lengths, custom boom lengths also available.
- *Tender-Lift* cable system (drumless hydraulic winch).
- Smooth, nearly silent 26' (8 M) cable travel.
- Completely waterproof, low voltage, hand-held remote control system.
- Full lift capacity at all boom angles.
- Full proportional hydraulic control of all functions.
- Telescopes under full load at all boom angles.
- 359° hydraulic rotation standard.
- Painted to match the yacht.
- Includes 20' (6.1 M) of hose and control wire measured from the bottom of the standpipe to the remote-mounted power unit (longer runs available if required for your application).
- Standpipe mount, cylindrical base or pyramid base.
- Hydraulic power unit:
 - Full proportional control -
 - 5 HP piston pump - 2.5 GPM.
 - 220 VAC, 50/60 HZ, 1 PHASE, 30 AMP (3 PHASE optional)
 - 23½" high x 17½" wide x 28½" long (60 x 45 x 71 CM).
 - Alternate HPU's available for special applications.

Lift Height and Reach with the Telescopic Section Retracted —

Boom Angle:	Reach: (148" long boom hook to pipe center)	Reach: (140" short boom hook to pipe center)	Lift Height:† (140" short boom hook to deck)
0° Min.	148" (376 CM) Max.	140" (356 CM) Max.	14" (36 CM)
30°	125" (318 CM)	117" (297 CM)	88" (224 CM)
65° Max.	54" (137 CM) Min.	61" (155 CM) Min.	141" (358 CM)

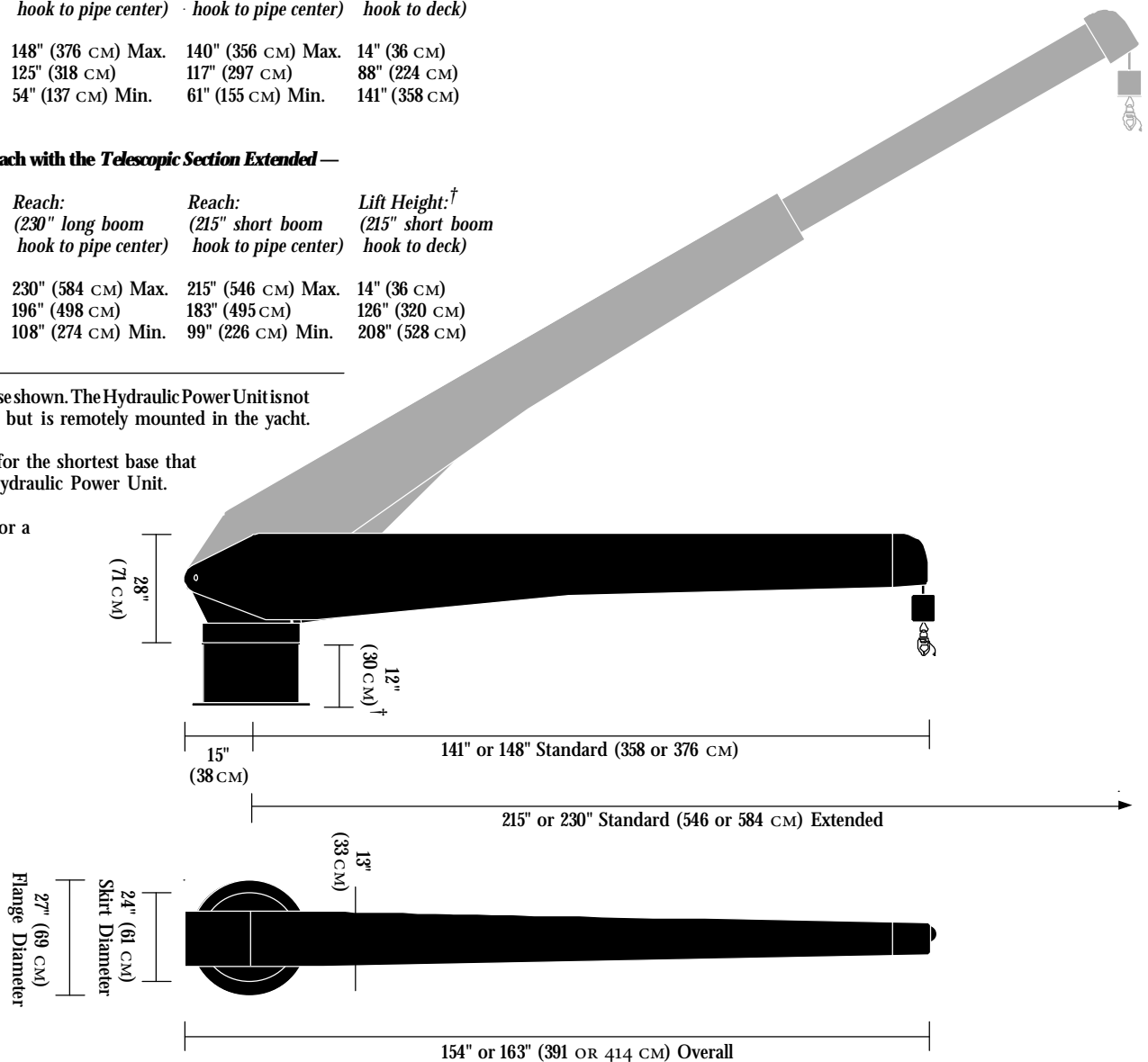
Lift Height and Reach with the Telescopic Section Extended —

Boom Angle:	Reach: (230" long boom hook to pipe center)	Reach: (215" short boom hook to pipe center)	Lift Height:† (215" short boom hook to deck)
0° Min.	230" (584 CM) Max.	215" (546 CM) Max.	14" (36 CM)
30°	196" (498 CM)	183" (465 CM)	126" (320 CM)
65° Max.	108" (274 CM) Min.	99" (226 CM) Min.	208" (528 CM)

† Short cylindrical bases shown. The Hydraulic Power Unit is not located in the base but is remotely mounted in the yacht.

Add 11" of height for the shortest base that can contain the Hydraulic Power Unit.

Add 5" of height for a standpipe base.



Quality-Built
Marine Equipment

3100 Southwest Tenth Street
Pompano Beach, Florida 33069
United States of America
-please contact us for overseas representatives-

TEL • (954) 957-8333
FAX • (954) 957-8330
WEB • www.marquipt.com
EMAIL • sales@marquipt.com

MarQuipt