

Tender-Lift® 2,000—

- 2,000 LBS (900 KG) lift capacity.
- Full lift capacity at all boom angles.
- Full proportional control of all hydraulic functions.
- 126" or 144" boom lengths.
- Cylindrical base, pyramid base or standpipe mounting options.

- *Tender-Lift* cable system—drumless hydraulic winch with smooth, nearly silent 26' (8M) of cable travel.
- 270° hydraulic rotation standard.
- 360° rotation available.
- Completely waterproof, low voltage, hand-held remote control system.

- Finished to match your yacht.
- Includes 20' (6.1 M) of hose and control wire measured from the bottom of the standpipe to the remote-mounted power unit (longer runs available where required).

- Hydraulic power unit:
Full proportional control -
- 5 HP piston pump - 2.5 GPM.
- 220 VAC, 50/60 HZ, 1 PHASE, 30 AMP (3 PHASE optional)
- 23½" high x 17½" wide x 28½" long (60 x 45 x 71 CM).
- Alternate HPU's available for special applications.

Boom Operating Angles 0-61°—

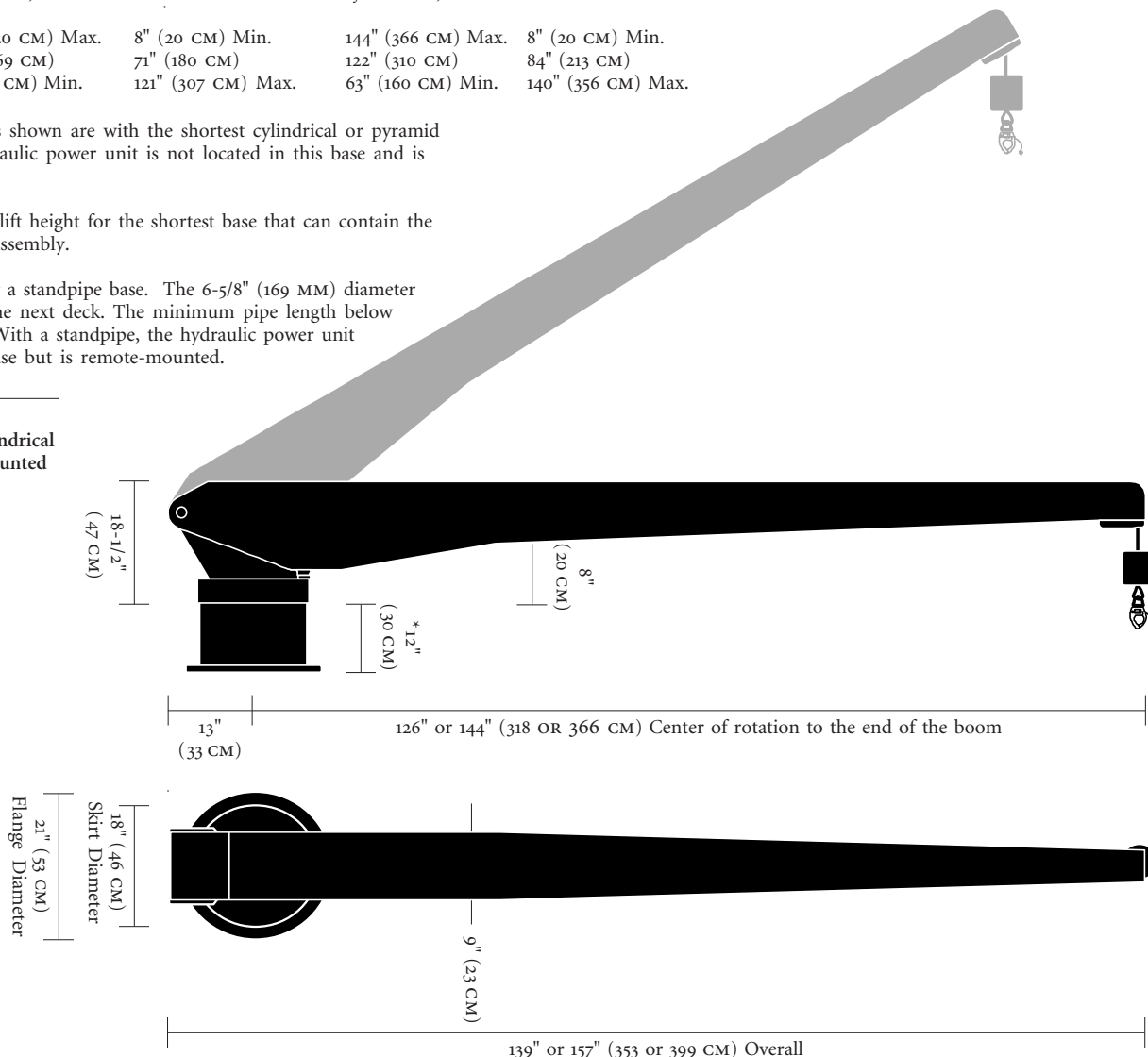
| Boom Angle: | 126" Boom Length | | 144" Boom Length | |
|-------------|--|---|--|---|
| | Reach: [*] (Hook to Center of Rotation) | Lift Height: [*] (Hook to Deck) | Reach: [*] (Hook to Center of Rotation) | Lift Height: [*] (Hook to Deck) |
| 0° Min. | 126" (320 CM) Max. | 8" (20 CM) Min. | 144" (366 CM) Max. | 8" (20 CM) Min. |
| 30° | 106" (269 CM) | 71" (180 CM) | 122" (310 CM) | 84" (213 CM) |
| 61° Max. | 53" (135 CM) Min. | 121" (307 CM) Max. | 63" (160 CM) Min. | 140" (356 CM) Max. |

*Reaches and lift heights shown are with the shortest cylindrical or pyramid base possible. The hydraulic power unit is not located in this base and is remote-mounted.

Add 12-1/2" (32 CM) of lift height for the shortest base that can contain the hydraulic power unit assembly.

Add 5" of lift height for a standpipe base. The 6-5/8" (169 MM) diameter pipe goes through to the next deck. The minimum pipe length below deck is 72" (183 CM). With a standpipe, the hydraulic power unit is not located in the base but is remote-mounted.

Right:
TL-2000 on a short cylindrical base with a remote-mounted hydraulic power unit.



Quality-Built
Marine Equipment

3100 Southwest Tenth Street
Pompano Beach, Florida 33069
United States of America

-please contact us for overseas representatives-

TEL • (954) 957-8333
FAX • (954) 957-8330
WEB • www.marquipt.com
EMAIL • sales@marquipt.com

MarQuipt