

Tender-Lift® 2,500—

- 2,500 LBS (1,125 KG) lift capacity.
- *Tender-Lift* system (drumless hydraulic winch).
- Smooth, nearly silent 26' (8 M) of cable travel.
- Full proportional control of all hydraulic functions.

- Full lift capacity at all boom angles.
- 270° hydraulic rotation standard.
- 360° rotation available.
- Completely waterproof, low voltage, hand-held remote control system.
- Cylindrical base, pyramid base or standpipe mounting options.

- Finished to match your yacht.
- Custom designs and lengths available.
- Includes 20' (6.1 M) of hose and control wire measured from the bottom of the standpipe to the remote-mounted power unit (longer runs available where required).

- Hydraulic power unit:
Full proportional control -
 - 5 HP piston pump - 2.5 GPM.
 - 220 VAC, 50/60 HZ, 1 PHASE, 30 AMP (3 PHASE optional)
 - 23½" high x 17½" wide x 28½" long (60 x 45 x 71 CM) .
 - Alternate HPU's available for special applications.

Boom Operating Angles 0-67°—

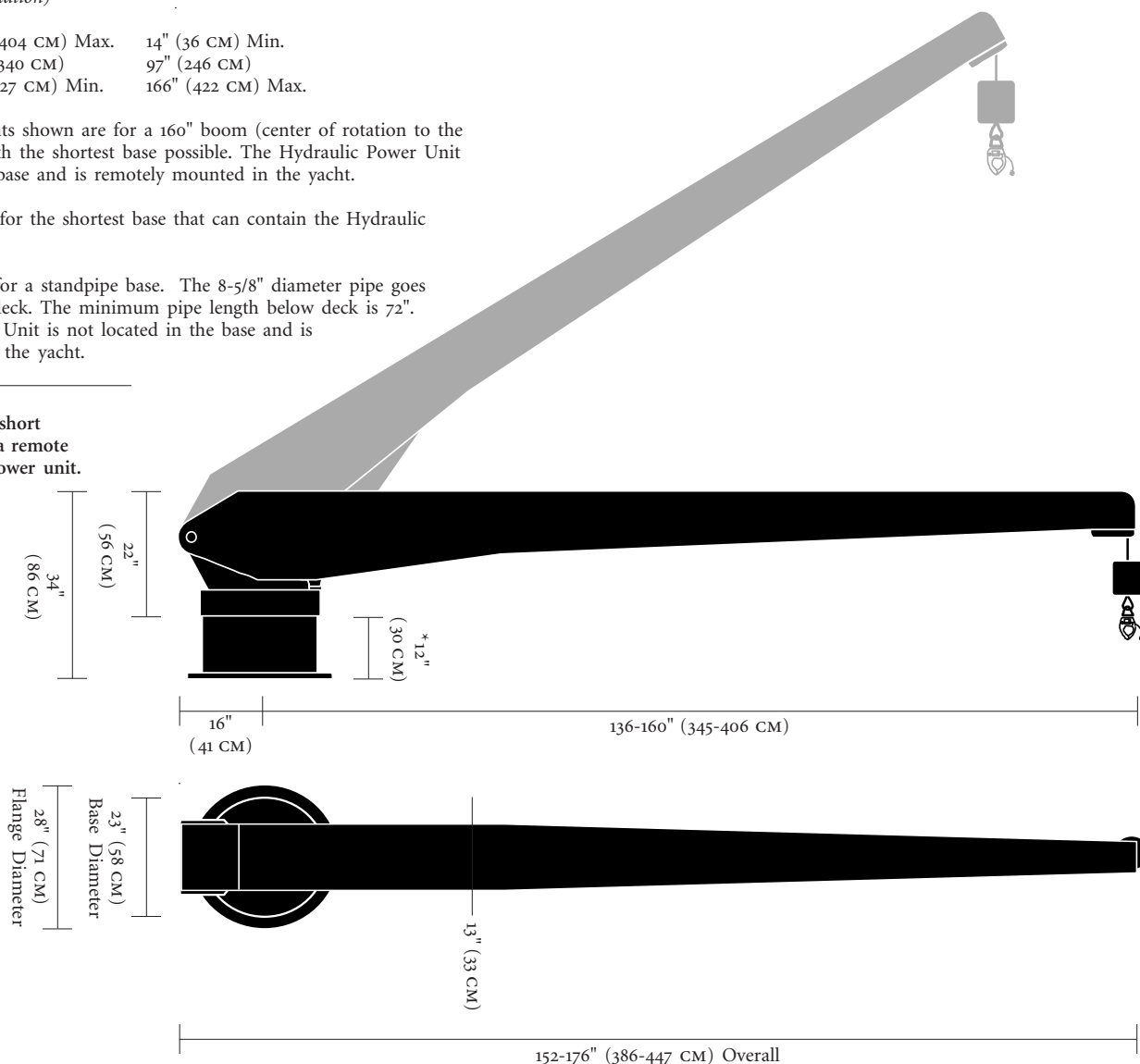
Boom Angle:	Reach: [*] 160" Boom Length (Hook to Center of Rotation)	Lift Height: [*] 160" Boom Length (Hook to Deck)
0° Min.	159" (404 CM) Max.	14" (36 CM) Min.
30°	134" (340 CM)	97" (246 CM)
67° Max.	50" (127 CM) Min.	166" (422 CM) Max.

^{*}Reaches and lift heights shown are for a 160" boom (center of rotation to the end of the boom) with the shortest base possible. The Hydraulic Power Unit is not located in the base and is remotely mounted in the yacht.

Add 13" of lift height for the shortest base that can contain the Hydraulic Power Unit.

Add 5" of lift height for a standpipe base. The 8-5/8" diameter pipe goes through to the next deck. The minimum pipe length below deck is 72". The Hydraulic Power Unit is not located in the base and is remotely mounted in the yacht.

Right:
Tender-Lift 2500 on a short cylindrical base with a remote mounted hydraulic power unit.



Quality-Built
Marine Equipment

3100 Southwest Tenth Street
Pompano Beach, Florida 33069
United States of America

-please contact us for overseas representatives-

TEL • (954) 957-8333
FAX • (954) 957-8330
WEB • www.marquipt.com
EMAIL • sales@marquipt.com

MarQuipt