

Tender-Lift® 3,000 / 4,000—

Resident on large yachts throughout the world, our popular *Tender-Lift Cranes* are available in standard and custom configurations to meet every owner's needs, providing unmatched reliability, safety, ease-of-use and MarQuipt's reputation for quality service and industry leading design.

- 3,000 or 4,000 LBS (1360/1820 KG) lifting capacity.
- Winchless *Tender-Lift* cable system.
- Fully proportional hydraulic control of all functions.
- MCA approved for < 500 GT vessels, call for details.
- Choice of boom lengths with telescoping models available.
- Capable of handling the full rated lift capacity at all boom elevation angles from 0° to 74°.
- 270° rotation standard.
- 359° rotation available.
- Waterproof, low-voltage, hand-held remote control.
- Awlgrip finished to match the yacht.

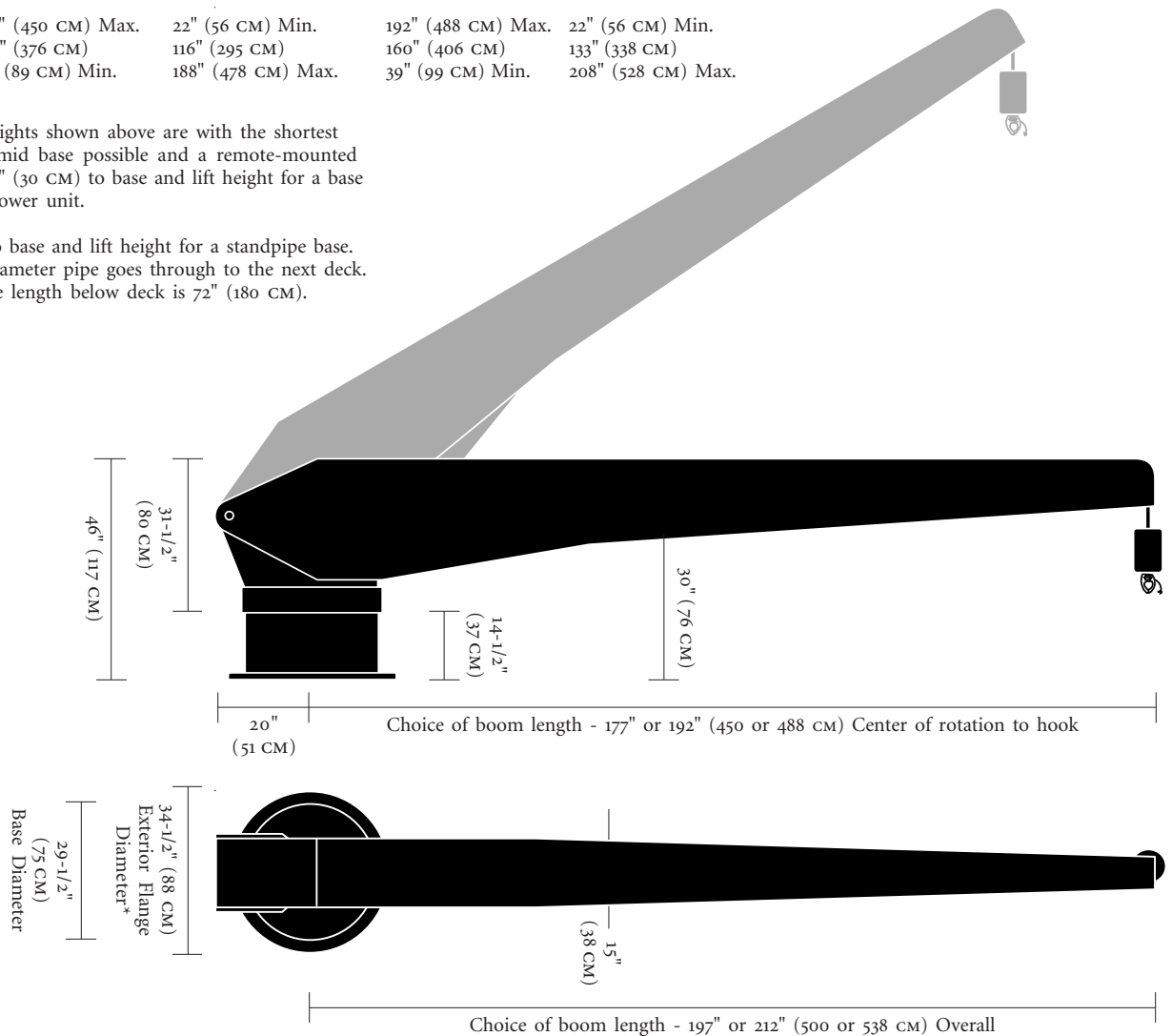
- Standpipe models available.
- Cylindrical base with a bolt-down or weld-down configuration shown below. Bolt-down bases are available with an interior bolt flange for a clean, bolt-free deck.
- Option to house the hydraulic power unit in an enclosure at the crane's base instead of the engine room.

Boom Operating Angles 0-74°—

Boom Angle:	177" Boom Length		192" Boom Length	
	Reach* (Hook to Center of Rotation)	Lift Height* (Hook to Deck)	Reach* (Hook to Center of Rotation)	Lift Height* (Hook to Deck)
0° Min.	177" (450 CM) Max.	22" (56 CM) Min.	192" (488 CM) Max.	22" (56 CM) Min.
30°	148" (376 CM)	116" (295 CM)	160" (406 CM)	133" (338 CM)
74° Max.	35" (89 CM) Min.	188" (478 CM) Max.	39" (99 CM) Min.	208" (528 CM) Max.

*Reaches and lift heights shown above are with the shortest cylindrical or pyramid base possible and a remote-mounted power unit. Add 12" (30 CM) to base and lift height for a base that contains the power unit.

Add 12" (30 CM) to base and lift height for a standpipe base. The 12" (30 CM) diameter pipe goes through to the next deck. The minimum pipe length below deck is 72" (180 CM).



Quality-Built
Marine Equipment

3100 Southwest Tenth Street
Pompano Beach, Florida 33069
United States of America

TEL • (954) 957-8333
FAX • (954) 957-8330
WEB • www.marquipt.com
EMAIL • sales@marquipt.com

MarQuipt